

## Location

### Location Map



### Important Note

Centro Residential Sales and Lettings limited have not tested any services, heating system, electrical system, appliances, fixtures and fittings, that may be included in this property and would advise interested parties to satisfy themselves as to their condition or investigating the presence of any deleterious materials.

Viewing: Strictly by appointment through:

**CENTRO RESIDENTIAL SALES AND LETTINGS LIMITED**

Tel: 020 8401 5000

E-mail: [residential@centro.plc.uk](mailto:residential@centro.plc.uk)

See a selection of our properties at [www.centro.plc.uk](http://www.centro.plc.uk)

**£1,300 Per Month -**  
Grange Road, Sutton, Surrey SM2 6SQ



### Description

- Garage
- Two Bedrooms
- Fitted Kitchen
- Communal Garden
- Unfurnished
- Lounge/Diner



### Features

- Gas central heating
- Communal garden
- Purpose built block

### What you need to know

- Term 12 months
- Rent £1300pcm exclusive of bills
- Security deposit £1500.00
- Council Tax Band C

## Accommodation

### Additional Photo



All dimensions and measurements are approximate and for guidance only.

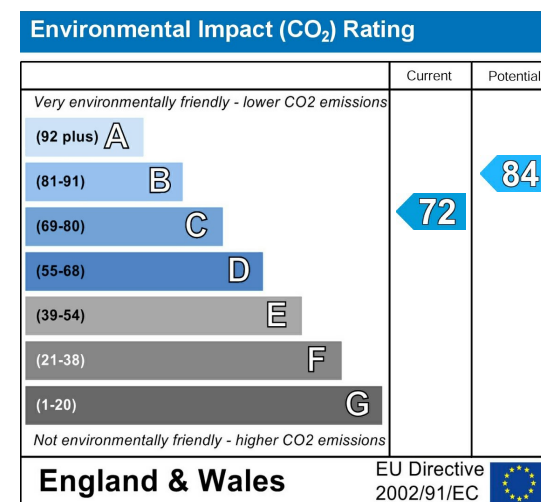
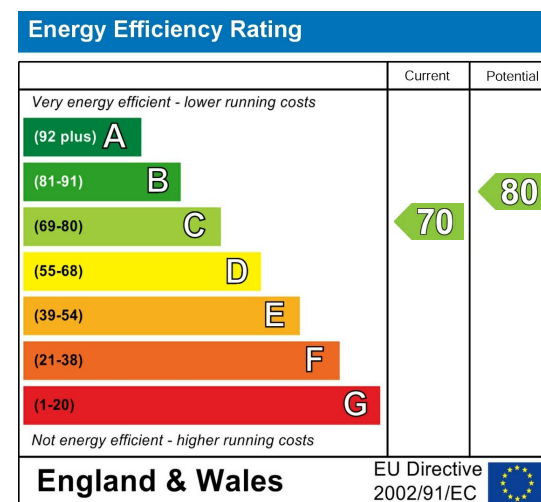
#### *Just Centro's Opinion...*

A well presented two bedroom apartment within walking distance to Sutton Station, Sutton Town Centre, local schools and amenities. This fantastic apartment comprises a lounge/diner with views overlooking the communal garden, modern fitted kitchen, two bedrooms and a family bathroom.

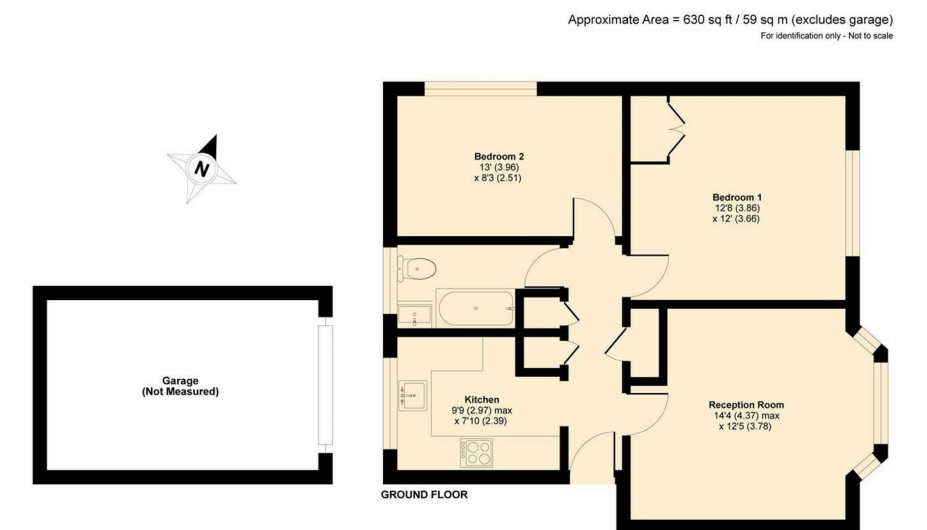
Additional benefits include storage space throughout, private garage, gas central heating and a communal garden.

Offered unfurnished and available from March.

### EPC Graph



### Floor Plan



Floor plan produced in accordance with RICS Property Measurement Standards incorporating International Property Measurement Standards (IPMS Residential). Produced for Centro Residential Sales and Lettings Limited. REF: 632256

For illustration purposes only