

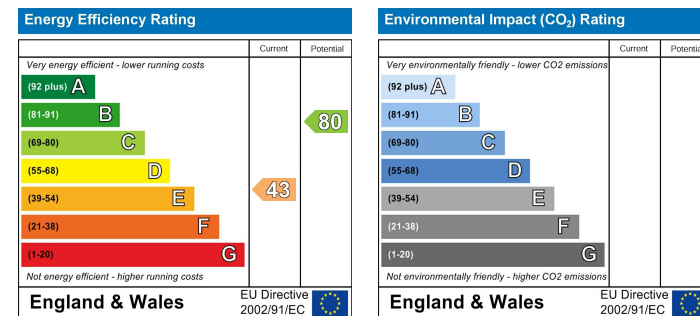
Location Map



£3,500 Per Month - 8th September 2022
Sandy Lane, Sutton, Surrey SM2 7EP



EPC Graph



Important Note

Centro Residential Sales and Lettings limited have not tested any services, heating system, electrical system, appliances, fixtures and fittings, that may be included in this property and would advise interested parties to satisfy themselves as to their condition or investigating the presence of any deleterious materials.

Viewing: Strictly by appointment through:

CENTRO RESIDENTIAL SALES AND LETTINGS LIMITED

Tel: 020 8401 5000

E-mail: residential@centro.plc.uk

See a selection of our properties at www.centro.plc.uk

Description

- Detached Home
- Five Bedrooms
- Garage
- Two Reception Rooms
- Large Garden
- Driveway Parking
- EPC Rating : E
- Council Tax Band : G

Features

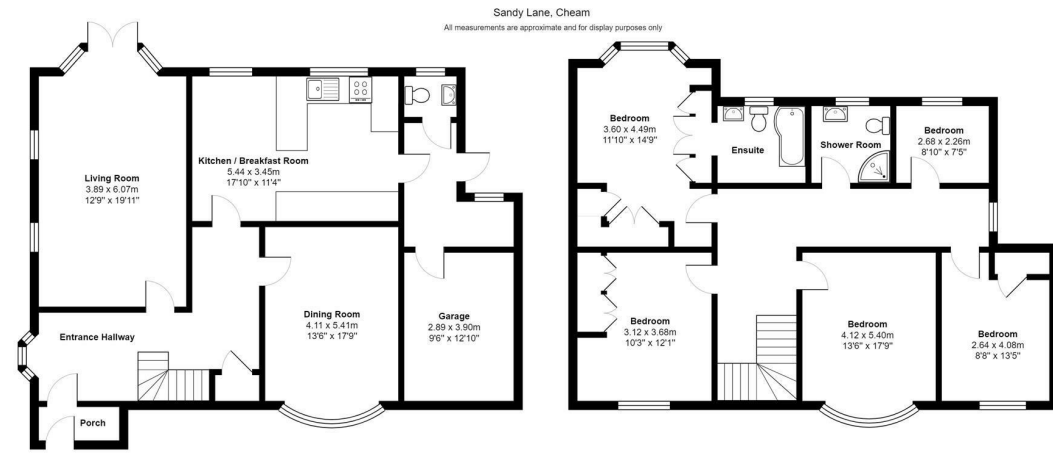
- Gas Central Heating
- Double Glazing
- Neutral Décor

What you need to know

- Term: 12 months
- Rent: £3500pcm exclusive of bills
- Security deposit: £4038.00
- Council Tax Band G
- Energy Rating: E



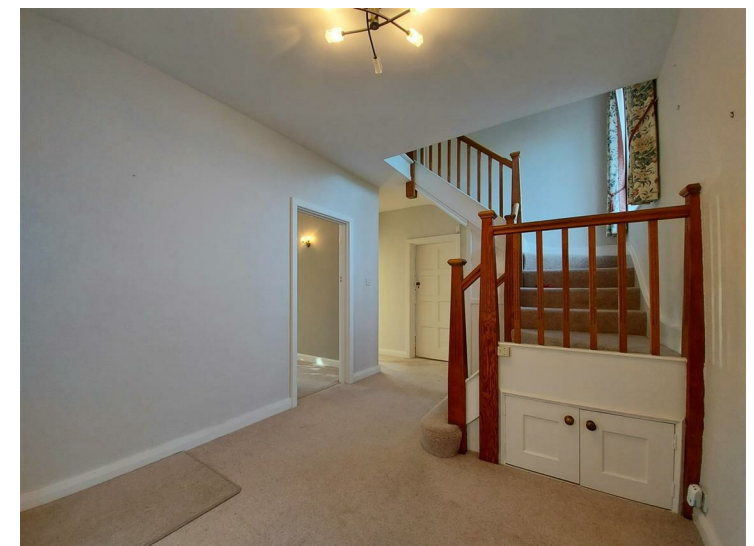
Floor Plan



For illustration purposes only
Accommodation



Additional Photos



All dimensions and measurements are approximate and for guidance only.

Just Centro's Opinion...

A beautiful five bedroom, two bathroom home set on the popular Sandy Lane in South Cheam, on the ground floor this lovely home offers you a spacious lounge, a modern kitchen/breakfast room, a separate dining room garage and driveway parking.

Upstairs you have a master bedroom with en-suite bathroom, a further three double bedrooms, one single bedroom and a shower room.

This detached home boasts a lovely rear garden with patio and grassed areas.

Cuddington Croft Primary School, Avenue Primary Academy, St Dunstan's Cheam CoFE Primary School, Nonsuch High School for Girls and Harris Academy Sutton are all within a 1 mile radius.

Offered Unfurnished and available in September.