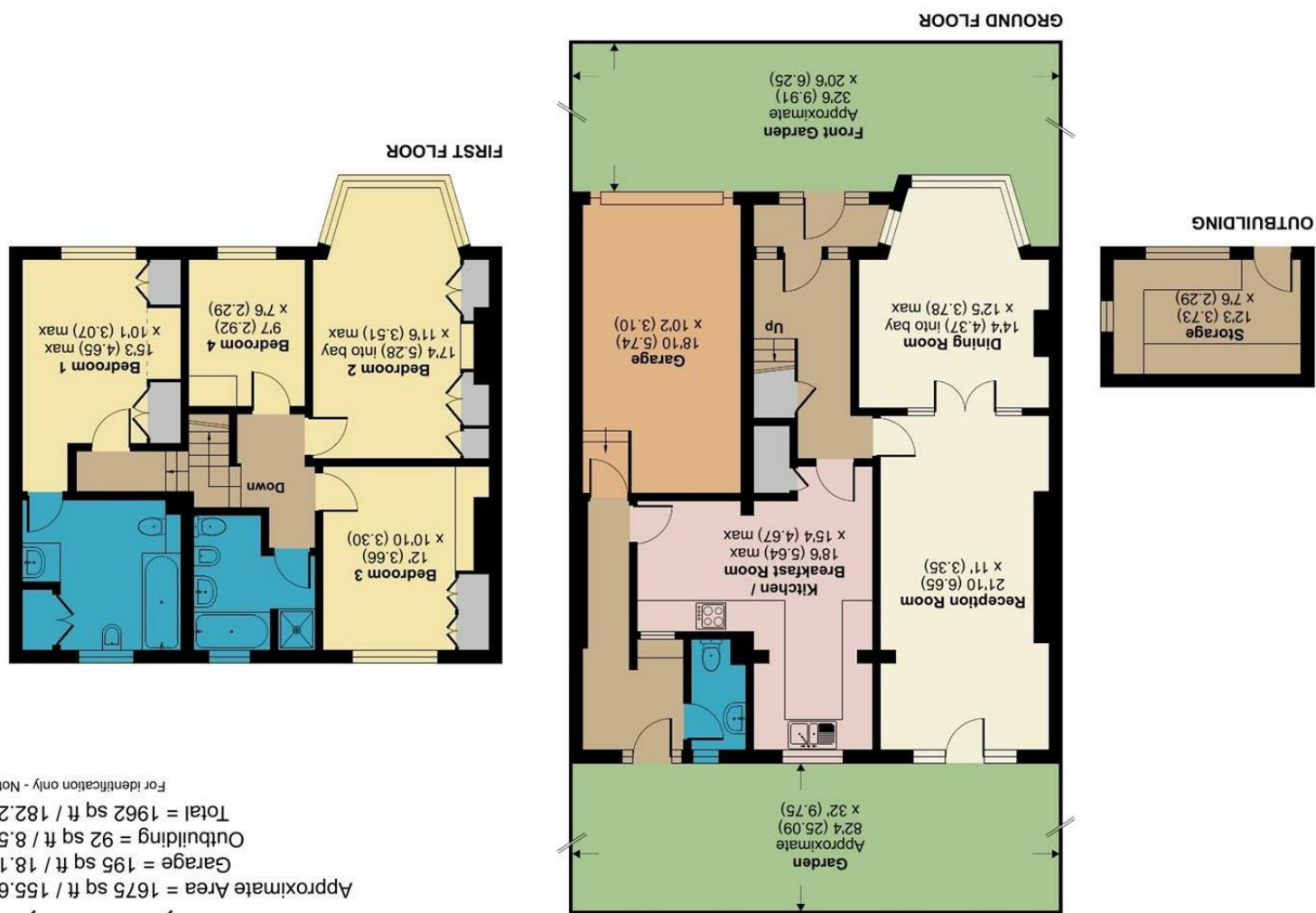




Floor plan produced in accordance with RICS Property Measurement Standards incorporating International Property Measurement Standards (IPMS2 Residential). © ncthecocm 2023. RICS Certified Property Measurer REF: 1023135



Approximate Area = 1675 sq ft / 155.6 sq m
 Garage = 195 sq ft / 18.1 sq m
 Outbuilding = 92 sq ft / 8.5 sq m
 Total = 1962 sq ft / 182.2 sq m

Wickham Avenue, Chesham, SM3

For identification only - Not to scale



A FANTASTIC OPPORTUNITY TO PURCHASE THIS 4-BEDROOM FAMILY HOME ON THE OUTSKIRTS OF CHEAM VILLAGE WITH ITS HOST OF AMENITIES INCLUDING FANTASTIC SCHOOLS, LOCAL SHOPS, RESTAURANTS, AND TRANSPORT FACILITIES.

THE GROUND FLOOR OF THIS FABULOUS PROPERTY IS COMPRISED OF A LIGHT AND AIRY LOUNGE LEADING TO THE DINING ROOM, LARGE KITCHEN/BREAKFAST ROOM WITH ACCESS TO WC AND THE TRANQUIL REAR GARDEN OFFERING PLENTY OF SPACE TO RELAX AND UNWIND AFTER A HARD DAY'S WORK.

UPSTAIRS YOU ARE PRESENTED WITH 4 BEDROOMS AND THE FAMILY BATHROOM, THE MASTER BEDROOM ALSO BENEFITS FROM AN ENSUITE BATHROOM.

TO THE FRONT OF THE PROPERTY, YOU HAVE PARKING FOR SEVERAL CARS AND GARAGE.

CALL CHRISTIES TODAY ON 02086437777

- ONWARD CHAIN COMPLETE
- SOUGHT AFTER LOCATION
- CLOSE TO LOCAL AMENITIES
- EPC RATING D
- COUNCIL TAX BAND F

