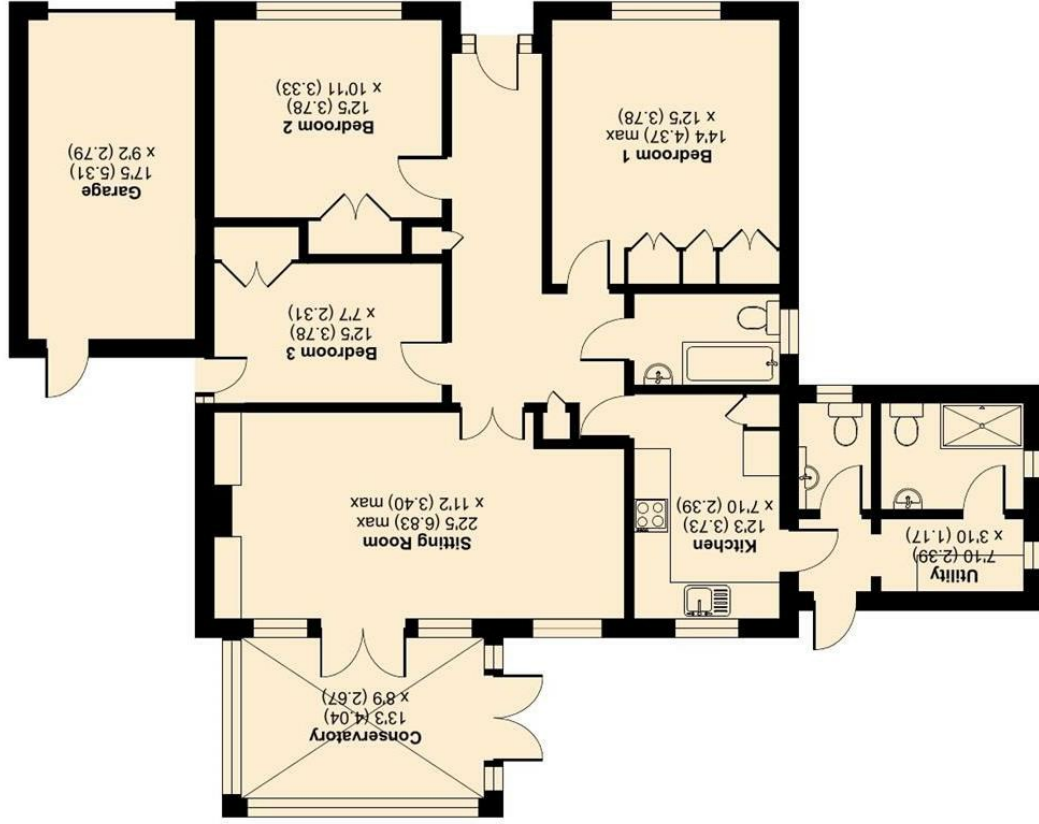


RICS Certified Property Measurer

Floor plan produced in accordance with RICS Property Measurement Standards incorporating International Property Measurement Standards (IPMS Residential). © nctechcom 2023. REF: 1015228

GROUND FLOOR



Shelley Close, Banstead, SM7
Approximate Area = 1453 sq ft / 134.9 sq m (includes garage)
For identification only - Not to scale



SHELLEY CLOSE, SURREY SM7 1EE

GUIDE PRICE £750,000

GUIDE PRICE £750,000-£800,000

CHRISTIES ARE PLEASED TO OFFER TO THE MARKET THIS 3-BEDROOM LINK DETACHED BUNGALOW. LOCATED IN A POPULAR CUL DE SAC AND CONVENIENTLY LOCATED WITHIN EASY REACH OF LOCAL SHOPPING PARADES, BANSTEAD HIGH STREET, AND TRANSPORT LINKS.

THE ACCOMMODATION COMPRISES OF AN ENTRANCE HALL WITH STORAGE CUPBOARDS, LIVING ROOM/DINING ROOM LEADING TO A CONSERVATORY, INTEGRATED KITCHEN LEADING TO UTILITY AREA/SHOWER ROOM/WC, 3 BEDROOMS AND A FAMILY BATHROOM.

OUTSIDE THE PROPERTY YOU WILL FIND A PRIVATE REAR GARDEN WITH SIDE ACCESS OFFERING PATIO AND LAWN AREAS WITH A VARIETY OF TREES AND SHRUBS, SINGLE GARAGE, AND OFF-ROAD PARKING FOR 3 CARS.

CALL CHRISTIES TODAY ON 01737 307 000 TO AVOID DISAPPOINTMENT.

- 3 BEDROOM LINK DETACHED BUNGALOW
- QUIET CUL DE SAC CLOSE TO SHOPS
- OFF ROAD PARKING AND GARAGE
- EPC RATING D
- COUNCIL TAX BAND F

