

## Location

### Location Map



### Important Note

Centro Residential Sales and Lettings limited have not tested any services, heating system, electrical system, appliances, fixtures and fittings, that may be included in this property and would advise interested parties to satisfy themselves as to their condition or investigating the presence of any deleterious materials.

Viewing: Strictly by appointment through:

**CENTRO RESIDENTIAL SALES AND LETTINGS LIMITED**

Tel: 020 8401 5000

E-mail: [residential@centro.plc.uk](mailto:residential@centro.plc.uk)

See a selection of our properties at [www.centro.plc.uk](http://www.centro.plc.uk)

**£1,400 Per Month -**  
Primrose Close, Wallington, Surrey SM6 7HJ



### Description

- Purpose Build
- Two Bedrooms
- Ground Floor
- Spacious Lounge
- Fitted Kitchen
- Newly Renovated
- Parking
- Energy Rating: D
- Council Tax Band C

### Features

- Electric Heating
- Double Glazing
- Parking

### What you need to know

- Term: 12 months
- Rent: £1400pcm exclusive of bills
- Security deposit: £1615.00
- Council Tax Band C
- Energy Rating: D



## Accommodation

### Additional Photo



All dimensions and measurements are approximate and for guidance only.

#### *Just Centro's Opinion...*

An inviting two-bedroom purpose-built apartment nestled in the vibrant community of Hackbridge. This ground-floor residence offers a perfect blend of modern comfort and convenient living.

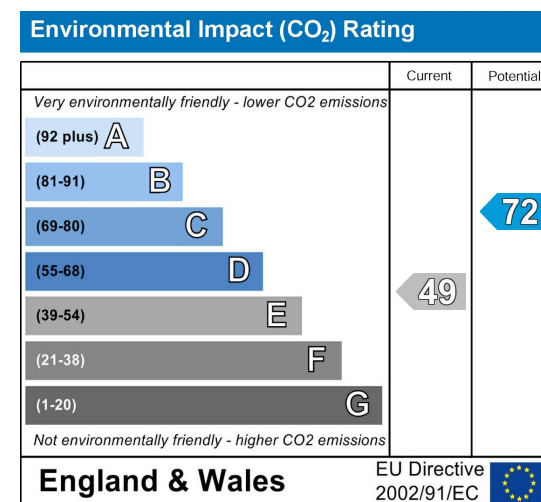
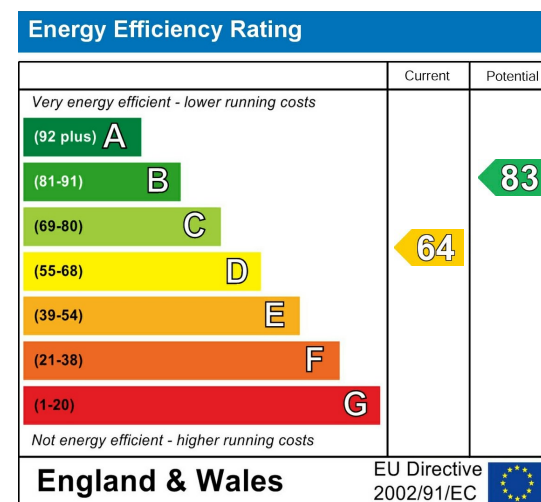
Comprising of a large double bedroom with fitted wardrobes, a second smaller double bedroom, a spacious lounge leading to a modern kitchen and a family bathroom

Other features include allocated and visitor parking, brand new carpets, newly painted throughout and a newly fitted electric heating system.

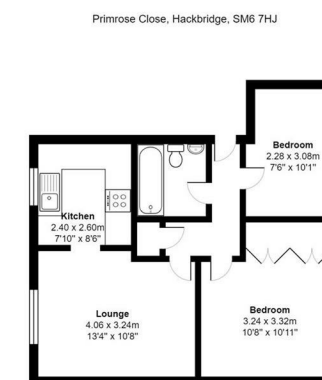
Excellent Transport Links: Commuting is a breeze with the Hackbridge train station and local shops and amenities.

Offered unfurnished and available now.

### EPC Graph



### Floor Plan



All measurements are approximate and for display purposes only

For illustration purposes only