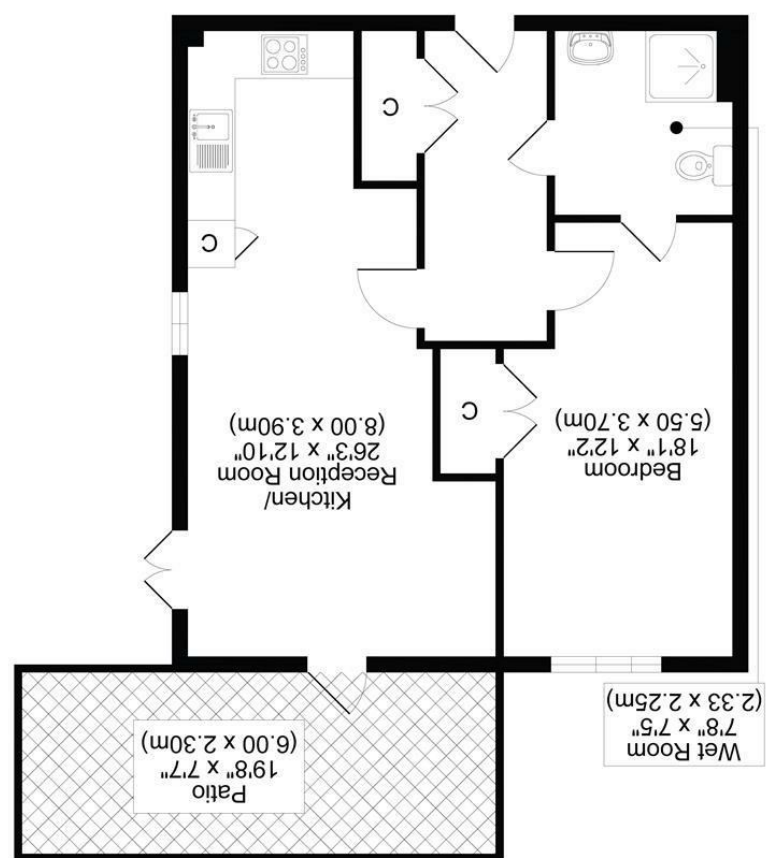


All measurements, walls, doors, windows, fittings and their appliances, their size and locations are shown conventionally and are approximate only and cannot be regarded as being a representation either by the seller or his agent.

optica MEDIA optimedia.co.uk



ELIZABETH HOUSE, MICKLEHAM GARDENS, SM3
TOTAL APPROX FLOOR PLAN AREA 589 SQ.FT (55 SQ.M)
GROUND FLOOR



****GUIDE PRICE £325,000 TO £350,000****

THIS IS A VERY RARE OPPORTUNITY TO PURCHASE A GROUND FLOOR ONE BEDROOM APARTMENT IN THIS VERY DESIRABLE RETIREMENT DEVELOPMENT IN A PRIME LOCATION FOR CHEAM VILLAGE HIGH-STREET AND LOCAL TRANSPORT LINKS AND NONSUCH PARK. DESIGNED FOR THOSE PEOPLE LOOKING FOR INDEPENDENT LIVING RATHER THAN A WARDEN-ASSISTED DEVELOPMENT, THIS ATTRACTIVE PROPERTY SIMPLY MUST BE SEEN IN ORDER TO BE FULLY APPRECIATED. HOMES OF THIS KIND ARE RARE TO THE MARKET, AND WITH THE PARTICULAR BENEFIT OF BEING GROUND FLOOR WITH ACCESS TO A PATIO, AN EARLY SALE IS ANTICIPATED. CALL CHRISTIES NOW TO RESERVE YOUR VIEWING APPOINTMENT.

- EPC RATING B
- COUNCIL TAX BAND C
- 0.2 MILE FROM CHEAM VILLAGE HIGH-STREET
- SERVICE CHARGES £227.04 PER MONTH
- LEASE 125 YEARS REMAINING
- NO ONWARD CHAIN
- OVER 55'S DEVELOPMENT

