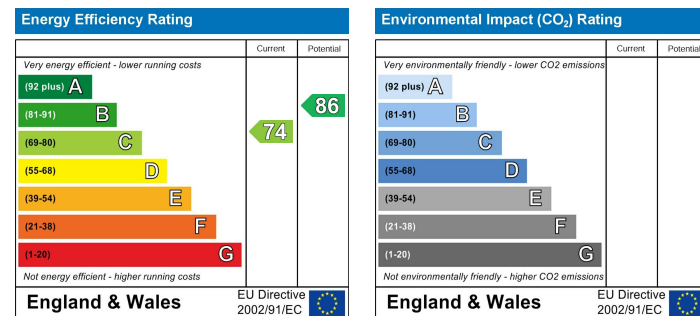


Location Map



EPC Graph



Important Note

Centro Residential Sales and Lettings limited have not tested any services, heating system, electrical system, appliances, fixtures and fittings, that may be included in this property and would advise interested parties to satisfy themselves as to their condition or investigating the presence of any deleterious materials.

Viewing: Strictly by appointment through:

CENTRO RESIDENTIAL SALES AND LETTINGS LIMITED

Tel: 020 8401 5000

E-mail: residential@centro.plc.uk

See a selection of our properties at www.centro.plc.uk

£2,250 Per Month - 8th March 2024

Beulah Road, Sutton, Surrey SM1 2QQ



Description

- Terraced Home
- Four Bedrooms
- Two Bathrooms
- Neutral Decor
- Set over 3 floors
- Spacious Lounge
- EPC Rating C
- Council Tax Band C

Features

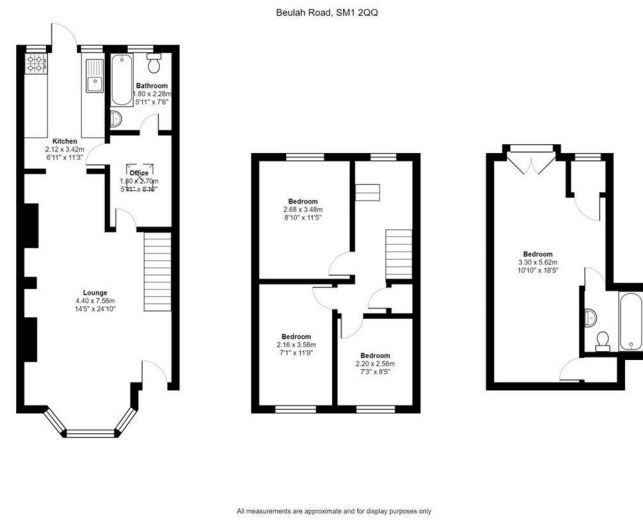
- Gas Central Heating
- Double Glazing
- Neutral Decor

What you need to know

- Term: 12 months
- Rent: £2250pcm exclusive of bills
- Security deposit: £2596.00
- Council Tax Band C
- Energy Rating: C



Floor Plan



For illustration purposes only
Accommodation



All dimensions and measurements are approximate and for guidance only.

Just Centro's Opinion...

This lovely family home has been extended to create a four-bedroom, two bathroom property. Downstairs comprises of a spacious lounge with living and dining space, a fitted kitchen, family bathroom and small office room. On the first floor you have three bedrooms with carpets and on the top floor you have the master bedroom with storage space, a Juliet Balcony and a en-suite bathroom.

Located on Beulah Road you are walking distance to Sutton High Street and a wide range of shopping facilities.

Robin Hood Junior School, Robin Hood Infants' School, Homefield Preparatory School, Westbourne Primary School, Sutton High School Manor Park Primary Academy and Sutton Grammar School all within 0.5 miles away.

Offered unfurnished and available in March.

Additional Photos

