

Location

From Sutton Station head towards Brighton Road and turn left into Cedar Road. At the top by the roundabout you will find the property can be found on the left.

Location Map



Important Note

Centro Residential Sales and Lettings limited have not tested any services, heating system, electrical system, appliances, fixtures and fittings, that may be included in this property and would advise interested parties to satisfy themselves as to their condition or investigating the presence of any deleterious materials.

Viewing: Strictly by appointment through:

CENTRO RESIDENTIAL SALES AND LETTINGS LIMITED

Tel: 020 8401 5000

E-mail: residential@centro.plc.uk

See a selection of our properties at www.centro.plc.uk

£1,000 Per Month -

37 Cedar Road, Sutton, Surrey SM2 5FZ



Description

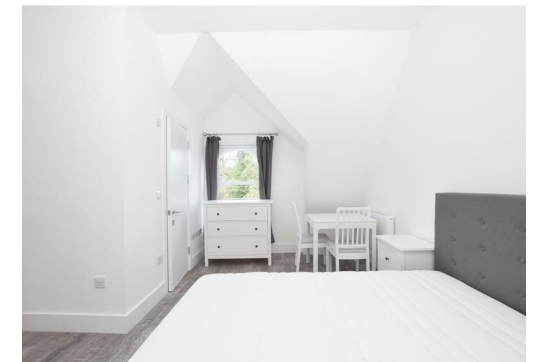
- Excellent Finish
- Studio Apartment
- Second Floor
- Spacious Lounge
- Modern Kitchen
- Stylish Shower-Room
- Quality Furnishings
- Energy Rating: D
- Council Tax Band: A

Features

- Electric Heating
- Double Glazing
- Neutral Decor

What you need to know

- Term: 12 months
- Rent: £1000pcm exclusive of bills
- Security deposit: £1153.00
- Energy Rating: D
- Council Tax Band: A



Accommodation

Additional Photo



All dimensions and measurements are approximate and for guidance only.

Just Centro's Opinion...

****DEPOSIT FREE OPTION AVAILABLE****

A beautiful studio apartment finished to an exceptional standard throughout.

This second floor apartment offers you a large living/sleeping area, a modern fitted kitchen and a stylish shower-room.

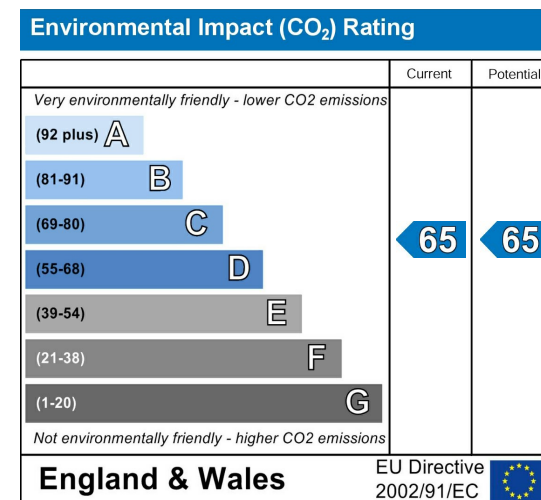
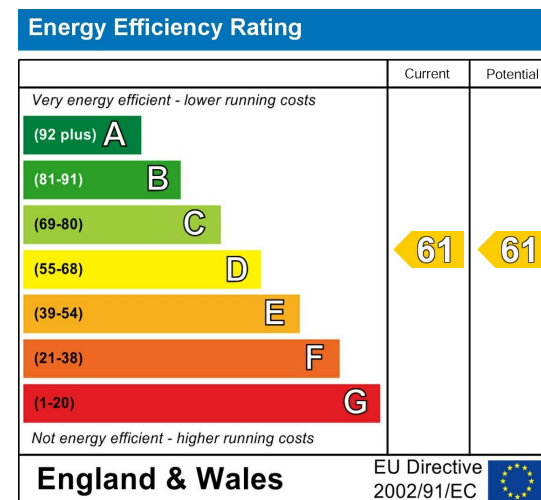
Benefits include secure Bike storage, all new appliances, domino induction hob and a choice of new furniture if required.

Located along Cedar Road you are only a short walking distance to Sutton Rail Station and Sutton High Streets wide range of Shops, Bars and Restaurants.

Offered furnished and available in April

Deposit free option available through REPOSIT, contact the branch for more information.

EPC Graph



Floor Plan



Total Area: 22.3 m² ... 240 ft²
All measurements are approximate and for display purposes only

For illustration purposes only