



www.centro-pic.uk | Telephone 020 8401 5000
 www.christiesworld.com | Telephone 020 8643 7777

MAYFAIR OFFICE.CO.UK

onTheMarket.com

zoopla.co.uk

rightmove

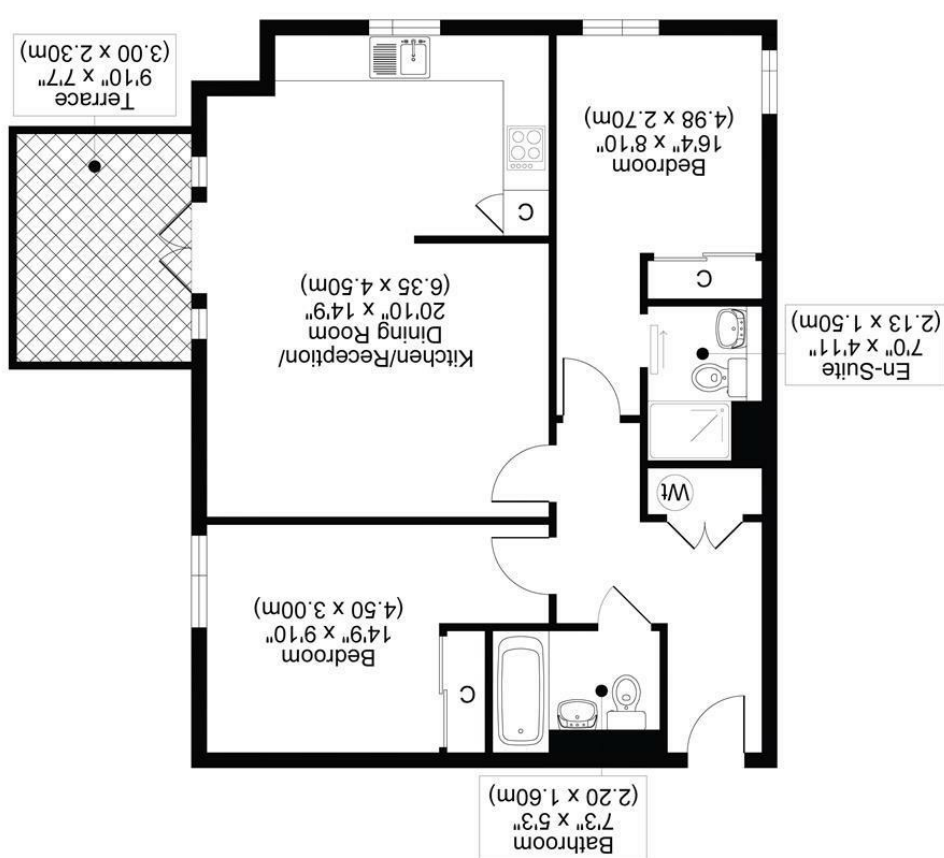
RICS

The Property Ombudsman

CHRISTIES

optica MEDIA optica.co.uk

All measurements, walls, doors, windows, fittings and their appliances, their size and locations are shown conventionally and are approximate only and cannot be regarded as being a representation either by the seller or his agent.



VICTORIA COURT, MULGRAVE ROAD, SM2
 TOTAL APPROX FLOOR PLAN AREA 734 SQ.FT (68 SQ.M)
 GROUND FLOOR



CHRISTIES



GROUND FLOOR FLATS WITH DIRECT GARDEN ACCESS ARE RARE TO FIND, SO WE ARE PARTICULARLY PLEASED TO BE ABLE TO OFFER FOR SALE THIS SPACIOUS TWO DOUBLE BEDROOM/TWO BATHROOM GROUND FLOOR PROPERTY SET IN AN ATTRACTIVE AND WELL-REGARDED BLOCK AND HAS DIRECT ACCESS TO COMMUNAL GROUNDS. OTHER BENEFITS INCLUDE FITTED WARDROBES IN BOTH BEDROOMS, ALLOCATED PARKING AND ENTRY SECURITY SYSTEM. NO ONWARD CHAIN.

ANNUAL MAINTENANCE £1500- £750 PAID TWICE A YEAR REVIEWED JANUARY
GROUND RENT £400 AS PROVIDED BY VENDOR
LEASE 172 YEARS

- TWO DOUBLE BEDROOMS
- GROUND FLOOR WITH ACCESS TO COMMUNAL GARDENS
- SECURITY ENTRY SYSTEM AND ALLOCATED PARKING
- EPC RATING C
- COUNCIL TAX D

