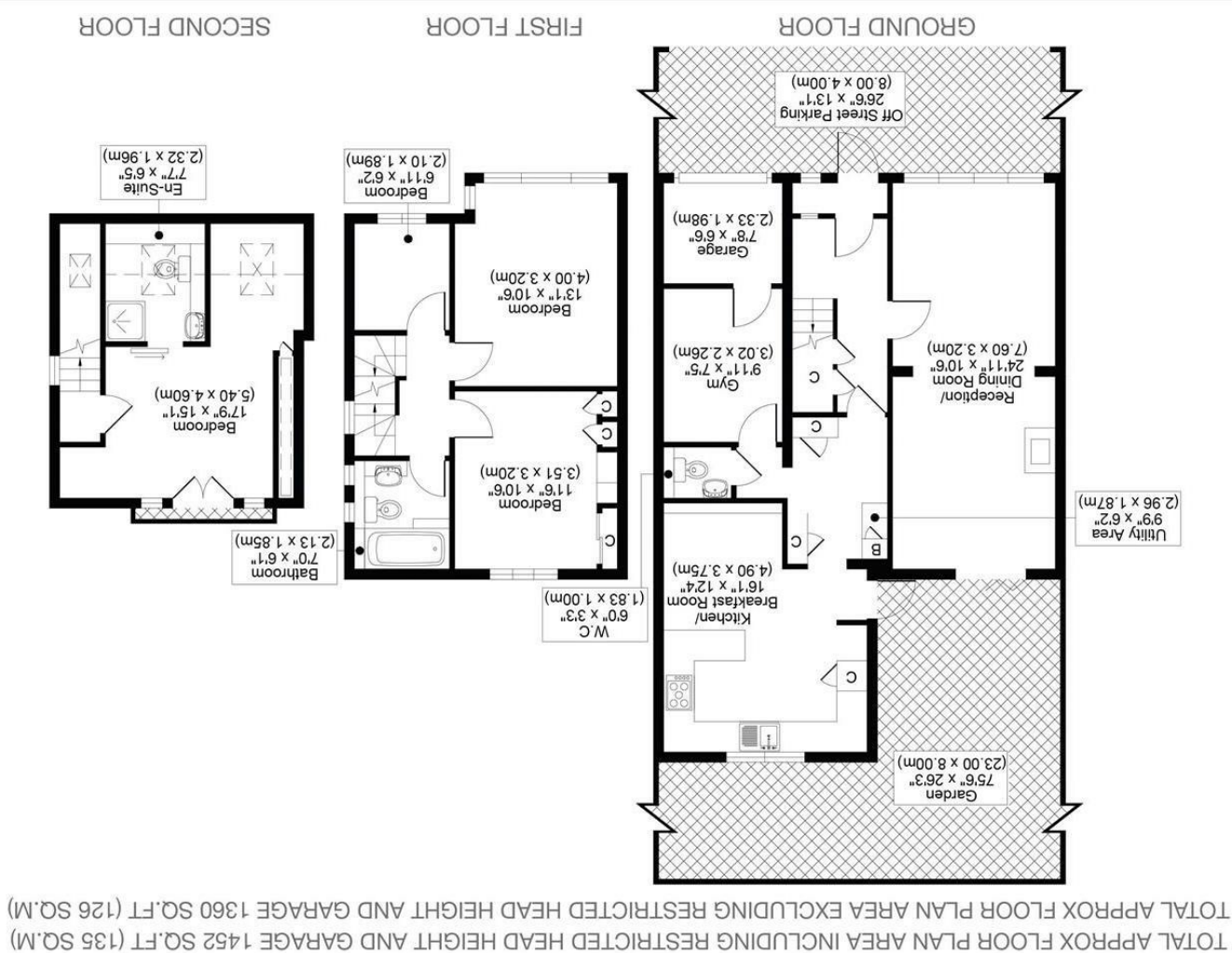




All measurements, walls, doors, windows, fittings and their appliances, their size and locations are shown conventionally and are approximate only and cannot be regarded as being a representation either by the seller or his agent.



CHRISTIES ARE PROUD TO PRESENT THIS FANTASTIC 4-BEDROOM EXTENDED FAMILY HOME, LOCATED LESS THAN A MILE FROM CARSHALTON RAIL STATION WHICH OFFERS SOUTHERN SERVICES TO LONDON. THE PROPERTY IS ALSO CONVENIENTLY LOCATED NEAR LOCAL PRIMARY AND SECONDARY SCHOOLS, LOCAL SHOPS, AND AMENITIES.

ON THE GROUND FLOOR YOU HAVE AN ELEGANT OPEN PLAN LOUNGE/DINING ROOM WITH FABULOUS PARQUET AMTICO FLOORING LEADING TO THE BEAUTIFUL KITCHEN/BREAKFAST ROOM WITH ACCESS TO YOUR TRANQUIL REAR GARDEN. THE GROUND FLOOR ALSO BENEFITS FROM W.C., GYM, AND UTILITY AREA. "WHAT MORE COULD YOU ASK FOR?"

ON THE FIRST FLOOR YOU WILL FIND A FURTHER TWO DOUBLE BEDROOMS ALONG WITH A SUPERB SINGLE BEDROOM AND FAMILY BATHROOM.

ON THE SECOND FLOOR YOU ARE PRESENTED WITH A BEAUTIFUL MASTER BEDROOM WHICH BENEFITS FROM JULIET BALCONY DOORS, AIR-CONDITIONING, DRESSING AREA, AND LUXURY ENSUITE.

ADDITIONAL BENEFITS INCLUDE OFF STREET PARKING, GARAGE, POTENTIAL TO EXTEND FURTHER (S.T.P.P) AND PLENTY MORE!

TO AVOID DISAPPOINTMENT, CALL OUR EXPERIENCED SALES TEAM TODAY TO RESERVE YOUR APPOINTMENT TO VIEW ON 02086437777.

- WONDERFULLY EXTENDED FAMILY HOME
- BEAUTIFULLY FINISHED THROUGHOUT
- SOUGHT AFTER LOCATION
- EPC RATING: D
- COUNCIL TAX BAND D

