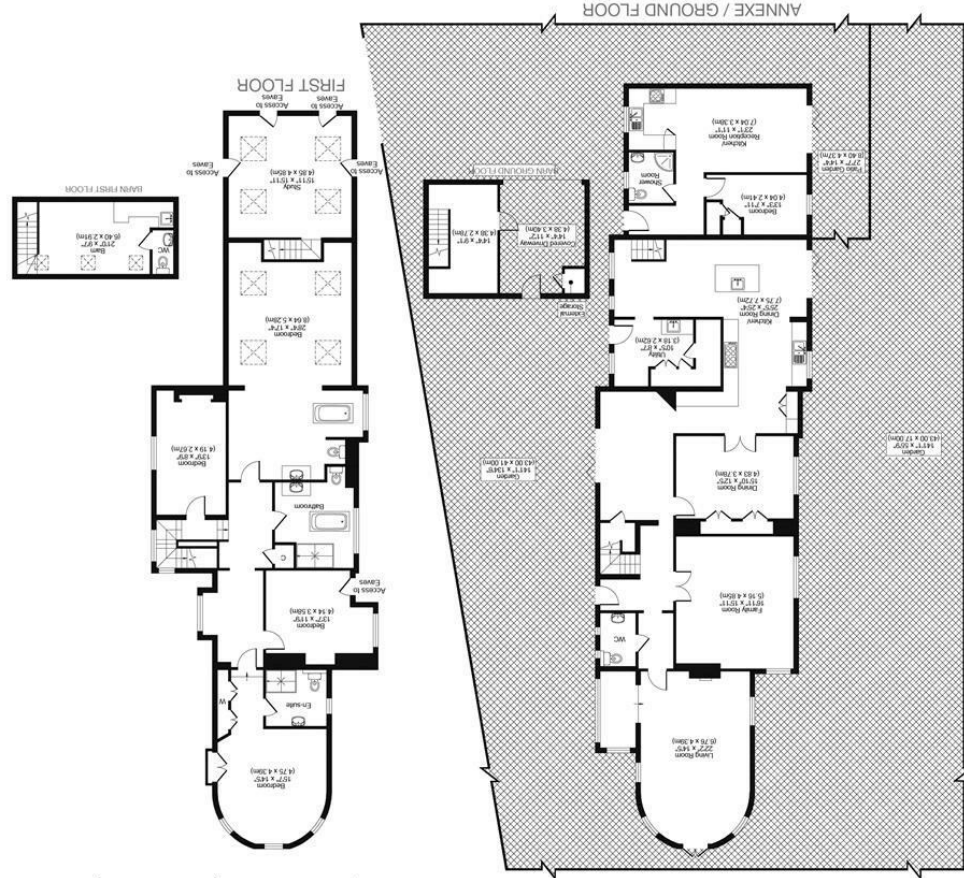




All measurements, walls, doors, windows, fittings and their appliances, their size and locations are shown conventionally and are approximate only and cannot be regarded as being a representation either by the seller or his agent.



HAZELWOOD LANE, CR5
 MAIN HOUSE APPROX FLOOR PLAN AREA 3,337 SQ.FT (310 SQ.M)
 ANNEXE APPROX FLOOR PLAN AREA 710 SQ.FT (66 SQ.M)
 BARN APPROX FLOOR PLAN AREA 334 SQ.FT (31 SQ.M)
 TOTAL APPROX FLOOR PLAN AREA 4,381 SQ.FT (410 SQ.M)



****GUIDE PRICE £2,000,000 - £2,250,000****

LOOKING FOR THE IDEAL BALANCE OF CHARACTER AND MODERN STYLE? THIS SIMPLY STUNNING FIVE BEDROOM/FOUR BATHROOM DETACHED FAMILY HOME HAS BEEN THE SUBJECT OF A MOST EXACTING PROGRAMME OF REFURBISHMENT, AND TRULY MUST BE SEEN TO BE FULLY APPRECIATED. IT OFFERS A MAIN HOUSE WITH AN ATTACHED TWO-STOREY ANNEXE, PLUS A FURTHER HOME OFFICE/WORKSPACE IN A SEPARATE DETACHED BARN. THE GENEROUS ELEVATED PLOT SETS THE HOUSE APART FROM NEIGHBOURING HOMES AND GIVES A REAL FEELING OF GRANDEUR. OFFERING HIGH QUALITY FITTINGS AND THE MOST CONTEMPORARY STYLING THROUGHOUT, THIS IS A TRULY "TURN-KEY" HOME THAT IS AWAITING ITS NEW OWNERS. IF THAT COULD BE YOU, THEN CALL US TODAY.

- UNIQUE FAMILY HOME WITH ATTACHED ANNEXE AND SEPARATE WORK FROM HOME SPACE, ALL SET IN AMAZING GROUNDS
- STYLISH AND CONTEMPORARY THROUGHOUT, WITH MANY HIGH QUALITY FITTINGS AND FINISHES
- CALL US TODAY TO ARRANGE YOUR VIEWING OF THIS UNIQUE RESIDENCE
- COUNCIL TAX BAND G
- EPC RATING C

