



www.centro-pic.uk | Telephone 020 8401 5000
 www.christiesworld.com | Telephone 020 8643 7777

MAYFAIR OFFICE.CO.UK

onTheMarket.com

zoopla.co.uk

rightmove

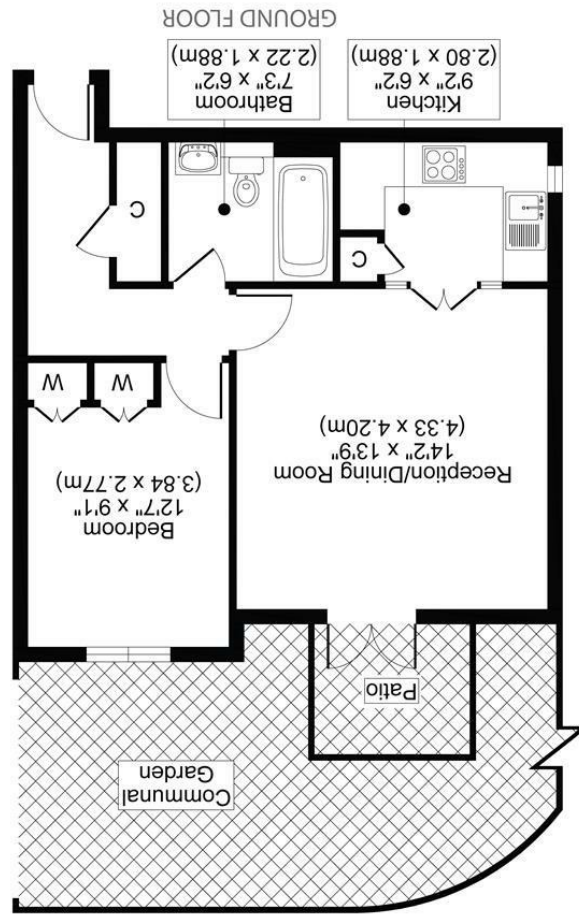
RICS

The Property Ombudsman

CHRISTIES

optica
 MEDIA
 opticmedia.co.uk

All measurements, walls, doors, windows, fittings and their appliances, their size and locations are shown conventionally and are approximate only and cannot be regarded as being a representation either by the seller or his agent.



KINGSWOOD DRIVE, SM2
 TOTAL APPROX FLOOR PLAN AREA 495 SQ.FT (46 SQ.M)



CHRISTIES



** GUIDE PRICE £250,000 - £275,000 **

WELCOME TO KINGSWOOD DRIVE, SUTTON! THIS CHARMING APARTMENT OFFERS A COSY RETREAT WITH ONE BEDROOM AND ONE BATHROOM, PERFECT FOR THOSE SEEKING A COMFORTABLE AND CONVENIENT LIVING SPACE. SITUATED IN A PRIME LOCATION, THIS PROPERTY IS IDEAL FOR INDIVIDUALS LOOKING TO ENJOY THE BEST OF WHAT SUTTON HAS TO OFFER.

THE APARTMENT BOASTS A WELL-DESIGNED LAYOUT, PROVIDING A SEAMLESS FLOW BETWEEN THE LIVING SPACES. THE BEDROOM OFFERS A PEACEFUL SANCTUARY, WHILE THE BATHROOM ENSURES BOTH STYLE AND FUNCTIONALITY. WHETHER YOU ARE A YOUNG PROFESSIONAL OR DOWNSIZING, THIS APARTMENT IS SURE TO MEET YOUR NEEDS.

LOCATED IN THE HEART OF SUTTON, RESIDENTS WILL HAVE EASY ACCESS TO A VARIETY OF AMENITIES, INCLUDING SHOPS, RESTAURANTS, AND PARKS. THE VIBRANT COMMUNITY AND EXCELLENT TRANSPORT LINKS MAKE THIS PROPERTY A FANTASTIC CHOICE FOR THOSE LOOKING TO IMMERSE THEMSELVES IN THE LOCAL LIFESTYLE.

DO NOT MISS OUT ON THE OPPORTUNITY TO MAKE THIS APARTMENT YOUR OWN. CONTACT US TODAY ON 02086615187.

- GROUND FLOOR
- PATIO GARDEN
- ALLOCATED PARKING
- EPC RATING C
- COUNCIL TAX BAND C

