

## Location



### Important Note

Centro Residential Sales and Lettings limited have not tested any services, heating system, electrical system, appliances, fixtures and fittings, that may be included in this property and would advise interested parties to satisfy themselves as to their condition or investigating the presence of any deleterious materials.

Viewing: Strictly by appointment through:

**CENTRO RESIDENTIAL SALES AND LETTINGS LIMITED**

Tel: 020 8401 5000

E-mail: [residential@centro.plc.uk](mailto:residential@centro.plc.uk)

See a selection of our properties at [www.centro.plc.uk](http://www.centro.plc.uk)

**£6,500 Per Month -**  
Derwent Avenue, London, SW15 3RA



### Description

- Semi-Detached
- Family Home
- Five Double Bedrooms
- Two Bathrooms
- Double Reception
- Kitchen/Diner
- Study
- Driveway
- Council Tax Band F
- EPC Rating D

### Features

- Gas Central Heating
- Double Glazing
- Neutral Decor

### What you need to know

- Term: 12 months
- Rent: £6500pcm exclusive of bills
- Security deposit: £9000.00
- Council Tax Band F
- Energy Rating: D



## Accommodation

### Additional Photo



All dimensions and measurements are approximate and for guidance only.

### Just Centro's Opinion...

A beautiful five-bedroom semi-detached home located in Kingston Vale, moments away from Richmond Park, the largest of London's Royal Parks. This stunning home set over three floors is located in a quiet residential road and offers you style, space and sophistication.

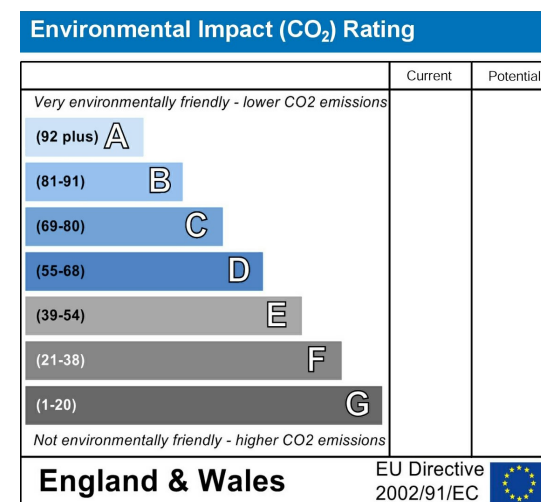
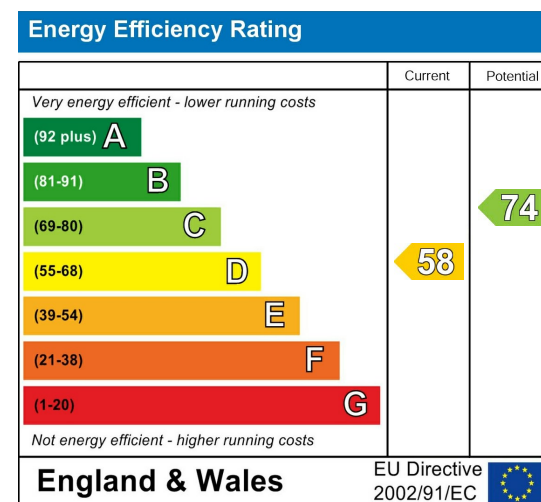
The ground floor welcomes you to a spacious hallway, a double reception, a modern finished kitchen with dining area, island with breakfast bar, a separate utility room, a study room/choice of 6th bedroom and a cloakroom. Both lounge and kitchen have patio doors leading to a private patio and artificial lawn garden.

On the first floor you are two large double bedrooms, a family bathroom suite and a huge master bedroom with balcony, a walk-in wardrobe and en-suite bathroom which has a separate shower and jacuzzi bath.

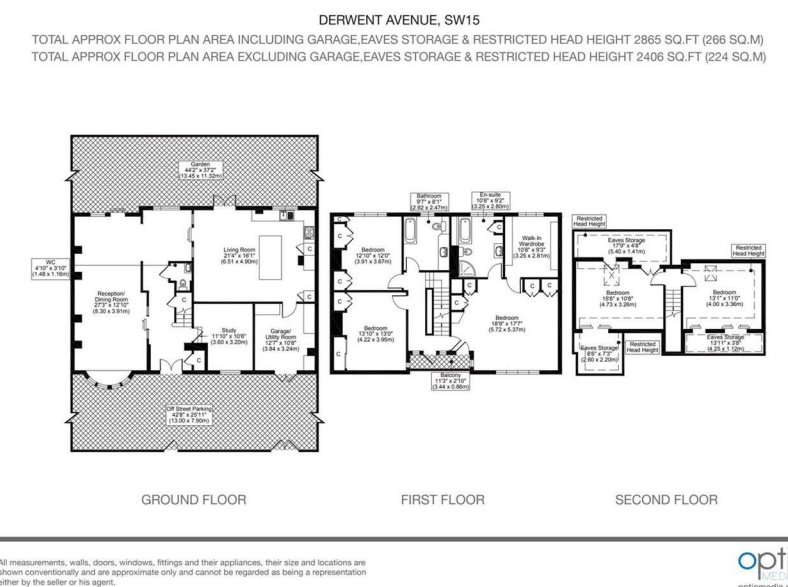
The top floor offers you a further two double bedrooms both with wrap around eave storage.

This lovely family home features, driveway parking as well as free on-street parking, gas central heating, five ring gas hob, American style fridge-freezer, dishwasher, full double glazing, ample storage and neutral decor.

### EPC Graph



### Floor Plan



For illustration purposes only