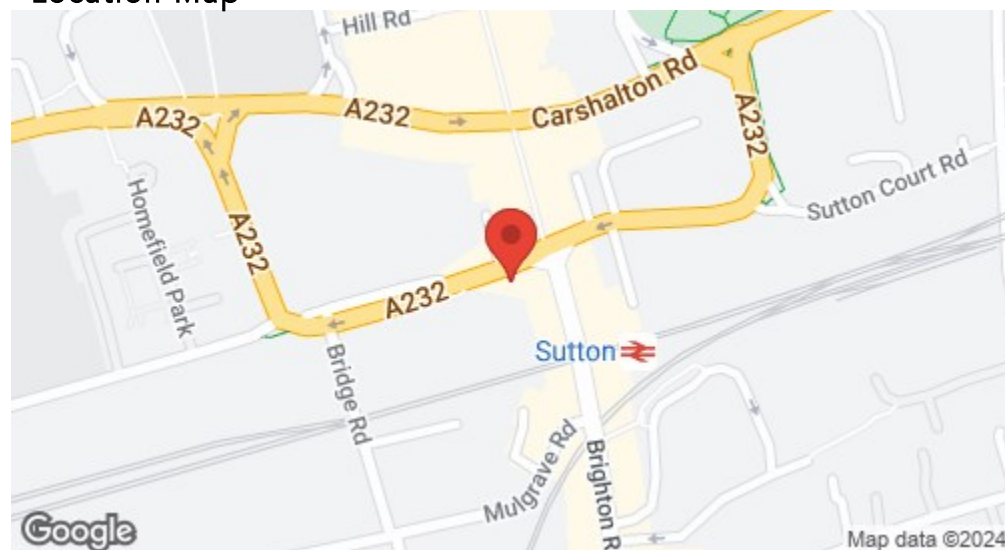
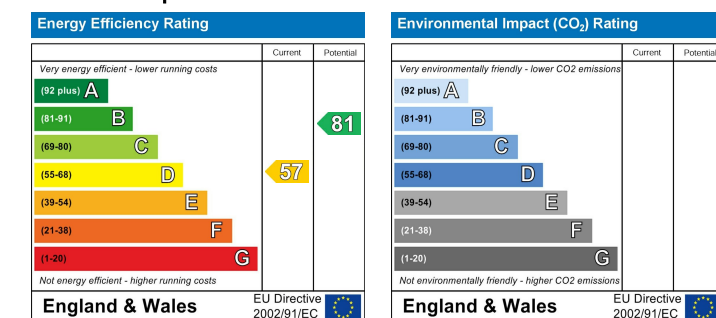


## Location

### Location Map



### EPC Graph



### Important Note

Centro Residential Sales and Lettings limited have not tested any services, heating system, electrical system, appliances, fixtures and fittings, that may be included in this property and would advise interested parties to satisfy themselves as to their condition or investigating the presence of any deleterious materials.

Viewing: Strictly by appointment through:

**CENTRO RESIDENTIAL SALES AND LETTINGS LIMITED**

Tel: 020 8401 5000

E-mail: [residential@centro.plc.uk](mailto:residential@centro.plc.uk)

See a selection of our properties at [www.centro.plc.uk](http://www.centro.plc.uk)

**£1,650 Per Month - 27th July 2024**

Grove Road, Sutton, Surrey SM1 2AL



### Description

- Purpose Build
- Two Bedrooms
- Recently Decorated
- Residents Parking
- Great Location
- Unfurnished
- Council Tax Band C
- EPC Rating D

### Features

- Electric Heating
- Double Glazing
- New Carpets

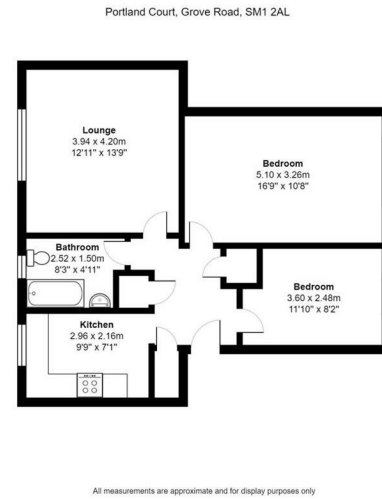
### What you need to know

- Term: 12 months
- Rent: £1650pcm exclusive of bills
- Security deposit: £1903.00
- Council Tax Band C
- Energy Rating: D





## Floor Plan



For illustration purposes only



All dimensions and measurements are approximate and for guidance only.

### *Just Centro's Opinion...*

Located within a short walking distance to Sutton Mainline Station, Sutton town centre and its host of amenities including shops, restaurants and transport facilities you will find this superb two-bedroom purpose built flat.

The property is located on the first floor and benefits from two great size double bedrooms, a spacious lounge with living and dining space, a brand-new kitchen and a stylish new bathroom suite.

Additional benefits include on residents parking, communal gardens, storage space, new electric heating, double glazing and newly decorated throughout.

Offered unfurnished and available to view now.

## Additional Photos

