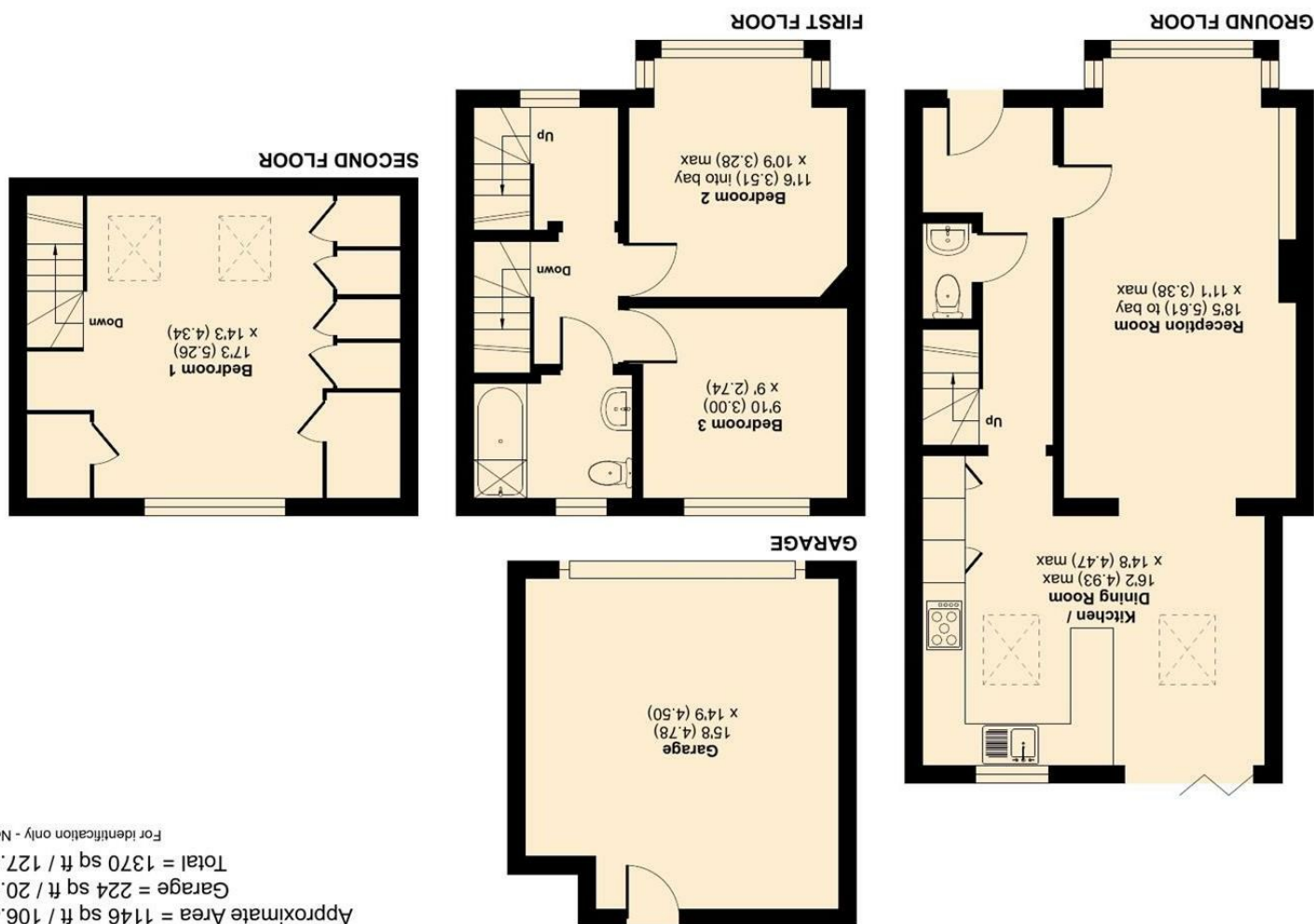




International Property Measurement Standards (IPMS2 Residential) © ncbecom 2024.
 Floor plan produced in accordance with RICS Property Measurement Standards incorporating
 Certified Property Measurer RICS REF: 1137012



Approximate Area = 1146 sq ft / 106.4 sq m
 Garage = 224 sq ft / 20.8 sq m
 Total = 1370 sq ft / 127.2 sq m

Poulton Avenue, Sutton, SM1



WELCOME TO POULTON AVENUE, SUTTON - A CHARMING MODERN MID-TERRACE HOUSE THAT BOASTS A LUXURIOUS LIVING EXPERIENCE THAT IS SURE TO IMPRESS. WITH A LARGE OPEN PLAN, LOUNGE, DINER AND KITCHEN ALONG WITH THREE COSY BEDROOMS, AND A STYLISH BATHROOM, THIS PROPERTY OFFERS THE PERFECT BLEND OF COMFORT AND ELEGANCE.

LOCATED IN A SOUGHT-AFTER AREA, THIS HOUSE IS IDEAL FOR THOSE LOOKING FOR A PEACEFUL YET CONVENIENT LIFESTYLE. THE MODERN DESIGN OF THE PROPERTY ENSURES A CONTEMPORARY FEEL, WHILE THE LUXURIOUS TOUCHES ADD A TOUCH OF SOPHISTICATION.

WHETHER YOU ARE RELAXING IN THE SPACIOUS LIVING ROOM, UNWINDING IN THE TRANQUIL GARDEN, OR PAMPERING YOURSELF IN THE SLEEK BATHROOM, THIS HOUSE OFFERS A PERFECT SANCTUARY FOR YOU TO CALL YOUR OWN.

DO NOT MISS OUT ON THE OPPORTUNITY TO MAKE THIS BEAUTIFUL HOUSE IN POULTON AVENUE YOUR NEW ABODE. EXPERIENCE THE BEST OF MODERN AND LUXURIOUS LIVING IN THIS DELIGHTFUL PROPERTY - BOOK A VIEWING TODAY AND STEP INTO YOUR FUTURE HOME!

- LUXURIOUS LIVING
- OFF STREET PARKING
- OPEN PLAN LIVING
- EPC RATING C
- COUNCIL TAX BAND D

