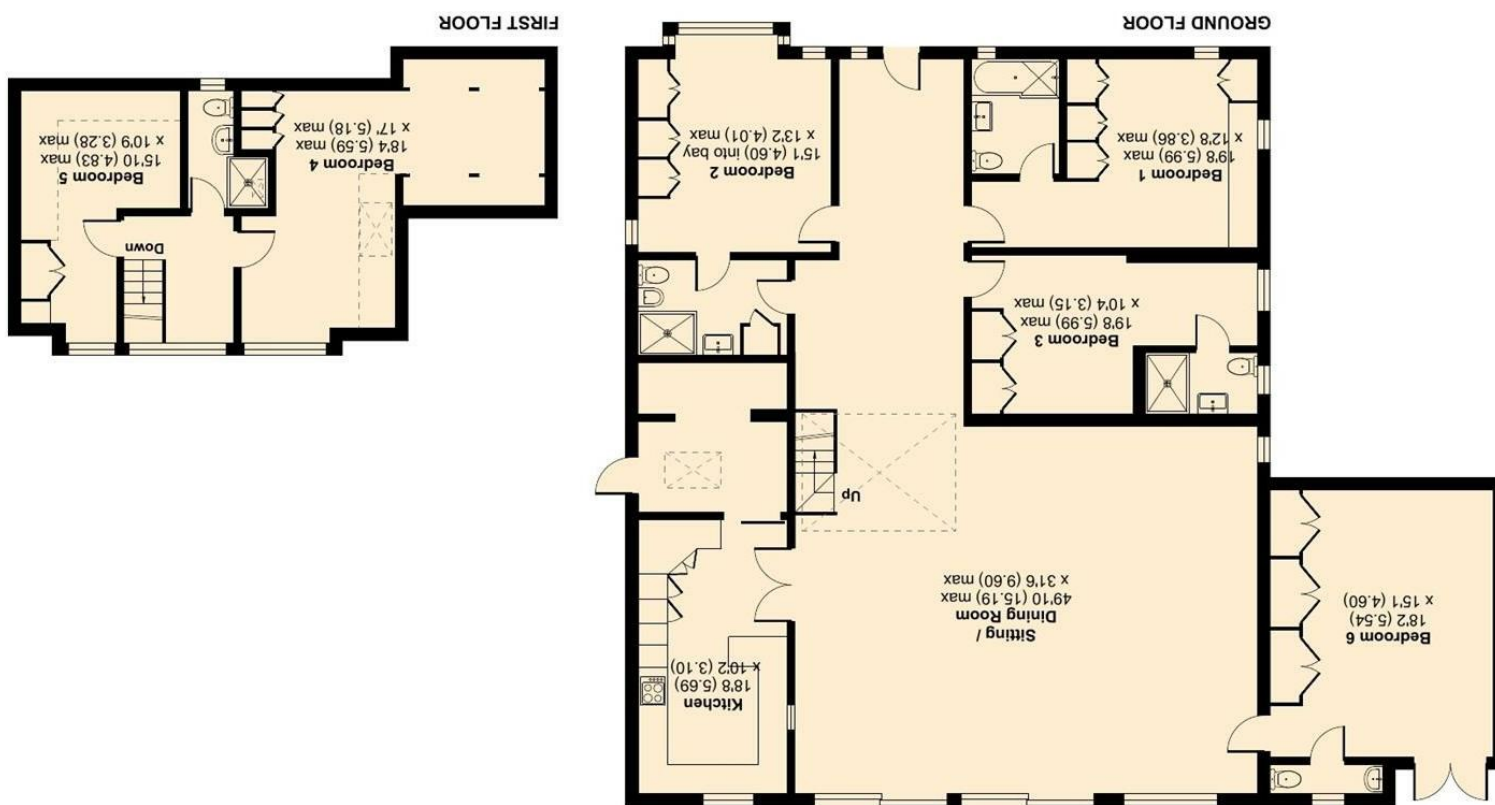




Floor plan produced in accordance with RICS Property Measurement Standards incorporating International Property Measurement Standards (IPMS2 Residential). © nckhcom 2024. Certified Property Measurer RICS REF: 1203303



Approximate Area = 2882 sq ft / 267.7 sq m
 Limited Use Area(s) = 80 sq ft / 7.4 sq m
 Total = 2962 sq ft / 275.1 sq m

Banstead Road, Banstead, SM7

For identification only - Not to scale

Denotes restricted head height



PERHAPS ONE OF THE MOST DECEPTIVELY SPACIOUS HOMES WE HAVE EVER HAD THE PLEASURE OF MARKETING, THIS TRULY SPACIOUS LIGHT AND AIRY SIX-BEDROOM DETACHED FAMILY HOME OFFERS EXCEPTIONAL ACCOMMODATION ARRANGED OVER TWO FLOORS AND SIMPLY MUST BE VIEWED IN ORDER TO BE FULLY APPRECIATED. THE PROPERTY HAS UNDERGONE AN EXTENSIVE PROGRAMME OF UPDATING AND MODERNISATION INCLUDING UNDERFLOOR HEATING AND THE INSTALLATION OF FOUR BATHROOMS. IT NOW OFFERS A LEVEL OF COMFORT THAT WILL GENUINELY SURPRISE YOU. CALL US TODAY TO BOOK YOUR VIEWING APPOINTMENT.

- TOTALLY DECEPTIVE AND WONDERFULLY SPACIOUS FAMILY HOME
- SIX BEDROOMS AND FOUR BEAUTIFULLY APPOINTED BATHROOMS
- INTERNAL VIEWING IS A MUST - CALL US TODAY
- COUNCIL TAX BAND G
- EPC RATING D

