



www.centro-pic.uk | Telephone 020 8401 5000
 www.christiesworld.com | Telephone 020 8643 7777

MAYFAIR OFFICE.CO.UK

onTheMarket.com

zoopla.co.uk

rightmove

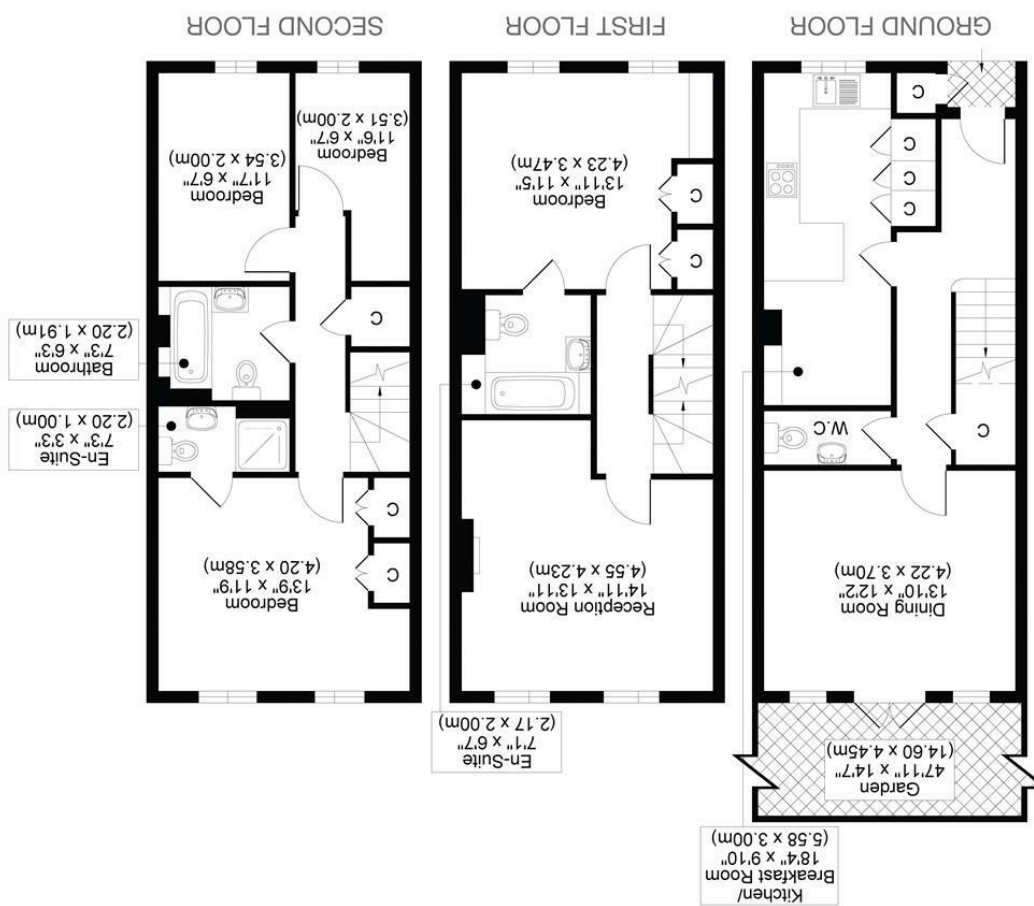
RICS

The Property Ombudsman

CHRISTIES

optica
 MEDIA
 optimedia.co.uk

All measurements, walls, doors, windows, fittings and their appliances, their size and locations are shown conventionally and are approximate only and cannot be regarded as being a representation either by the seller or his agent.



TOTAL APPROX FLOOR PLAN AREA 1404 SQ.FT (130 SQ.M)
 COURTENAY AVENUE, SM2



CHRISTIES



NESTLED IN THE PRESTIGIOUS COURTENAY AVENUE OF SUTTON, THIS CHARMING TOWNHOUSE OFFERS A PERFECT BLEND OF COMFORT AND ELEGANCE. BOASTING 4 BEDROOMS AND 3 BATHROOMS, THIS PROPERTY IS IDEAL FOR A GROWING FAMILY LOOKING FOR A SPACIOUS ABODE.

THE GROUND FLOOR FEATURES A WELL-APPOINTED KITCHEN/BREAKFAST ROOM, A CONVENIENT W.C., AND A RECEPTION ROOM THAT OPENS UP TO A PRIVATE GARDEN OVERLOOKING THE PICTURESQUE OVERTON PARK.

VENTURE TO THE FIRST FLOOR, WHERE YOU'LL FIND AN ADDITIONAL RECEPTION ROOM THAT COULD EASILY BE TRANSFORMED INTO A 5TH BEDROOM, ALONGSIDE THE MASTER BEDROOM WITH ITS OWN ENSUITE BATHROOM. THE TOP FLOOR OFFERS A FURTHER LARGE DOUBLE BEDROOM WITH AN ENSUITE SHOWER-ROOM, A COSY SMALLER DOUBLE BEDROOM, A CHARMING SINGLE BEDROOM, AND A FAMILY BATHROOM, PROVIDING AMPLE SPACE FOR EVERYONE IN THE FAMILY.

THIS TOWNHOUSE ALSO COMES WITH ALLOCATED PARKING, ENSURING CONVENIENCE FOR YOU AND YOUR FAMILY. SITUATED IN A GATED DEVELOPMENT, THIS PROPERTY OFFERS SECURITY AND PEACE OF MIND. ITS PROXIMITY TO AMENITIES, EXCELLENT TRANSPORT LINKS, AND REPUTABLE SCHOOLS MAKE IT AN IDEAL FAMILY HOME.

DON'T MISS OUT ON THIS FANTASTIC OPPORTUNITY TO MAKE THIS BEAUTIFUL TOWNHOUSE YOUR NEW HOME. CONTACT US NOW TO ARRANGE A VIEWING AND MAKE THIS PROPERTY YOURS TODAY!

- TOWN HOUSE
- FOUR BEDROOMS
- THREE BATHROOMS
- TWO RECEPTION ROOMS
- GATED DEVELOPMENT
- NEWLY DECORATED
- NEW CARPETS
- OVERLOOKING OVERTON PARK
- EPC RATING D
- COUNCIL BAND F

